



Watchmaker's Eyeglass (ELB.101.169)

Plastic lens, diameter 25 mm. mounted in black plastic eye-grip frame. Magnification 3.5 x. Focal length 75 mm.



EYE Loupe (ELB.101.170)

A favourite with watchmakers and jewelers. Using precision acrylic lens the unit is very light and can be held comfortably in eye socket. Also available with adaptor for use with spectacles. Main advantage of this magnifier is that it can be put on and taken off with the greatest of ease.

Magnification 4X
Field of View 35 mm.
Working distance 50 mm.



Magnifier Folding (ELB.101.166)

Fitted in plastic frame, superior quality. dia. 25 mm.

- .01 Single
- .02 Double
- .03 Triple



Magnifier Folding (ELB.101.167)

Gowland type Plano-convex lens of extra white glass. Unbreakable plastic lens holder and aluminum anodized cover. Magnification 10 x.

- .01 Regular quality
- .02 Superior quality



Magnifier Folding (ELB.101.168)

Single Dia. 40 mm. Magnification 3.5 X

- .01 Regular quality
- .02 Superior quality



Graticule Magnifier (ELB.101.171)

A sophisticated high power stand magnifier with a graticule (reticule) holding attachment. Uses highly corrected precision optics to give fully colour corrected distortion-free and perfectly flat field upto the edge. Has a clear acrylic stand that allows ambient light illumination of the object and graticule. Provided with spiral twist mechanism for precision focusing and a focus lock ring. Ideal for engineering application like checking small parts, linear measurements, angles, hole dia., thread size and thickness. With the appropriate graticule it is an invaluable aid as graphic arts comparator for type, spacing and size. Also, useful for proof reading and editing, aerial photo checking and geological sand checking as well as for various physics experimental applications. The unit is provided with protective moulded case and a dust cover.

Magnification 8 X
Field of View 22 mm.
Working distance 20 mm.



Magnifier Reading Glass (ELB.101.172)

In unbreakable plastic mount with handle, in different beautiful colours.

- .01 Diameter 40 mm.
- .02 Diameter 50 mm.
- .03 Diameter 60 mm.
- .04 Diameter 75 mm.



Magnifier Reading Glass (ELB.101.173)

In Metal frame and handle, chrome plated , packed in cardboard box.

	Diameter	Focal Length	Magnification (approx.)
.01	40 mm.	10 cm.	3.5 X
.02	50 mm.	10 cm.	3.5 X
.03	50 mm.	12 cm.	3 X
.04	50 mm.	15 cm.	2.5 X
.05	50 mm.	20 cm.	2.25 X
.06	60 mm.	10 cm.	3.5 X
.07	60 mm.	15 cm.	2.5 X
.08	60 mm.	20 cm.	2.25 X
.09	75 mm.	10 cm.	3.5 X
.10	75 mm.	15 cm.	2.5 X
.11	75 mm.	20 cm.	2.25 X
.12	90 mm.	20 cm.	2.25 X
.13	100 mm.	15 cm.	2.5 X
.14	100 mm.	20 cm.	2.25 X
.15	125 mm.	30 cm.	2.25 X
.16	150 mm.	30 cm.	1.83 X



Magnifier Reading Glass (ELB.101.174)

In Metal frame and bakelite handle, chrome plated, packed in cardboard box. Superior quality.

	Diameter	Focal Length	Magnification (approx.)
.01	40 mm.	10 cm.	3.5 X
.02	50 mm.	10 cm.	3.5 X
.03	50 mm.	12 cm.	3 X
.04	50 mm.	15 cm.	2.5 X
.05	50 mm.	20 cm.	2.25 X
.06	60 mm.	10 cm.	3.5 X
.07	60 mm.	15 cm.	2.5 X
.08	60 mm.	20 cm.	2.25 X
.09	75 mm.	10 cm.	3.5 X
.10	75 mm.	15 cm.	2.5 X
.11	75 mm.	20 cm.	2.25 X
.12	90 mm.	20 cm.	2.25 X
.13	100 mm.	15 cm.	2.5 X
.14	100 mm.	20 cm.	2.25 X
.15	125 mm.	30 cm.	2.25 X
.16	150 mm.	30 cm.	1.83 X

Magnifier Stand (ELB.101.175)



Consists of highly chromium Plated Lens Holder with horizontal Arm Vertical Rod with Clamp for holding the arm fitted on wrinkle painted iron base. Horizontally and vertically adjustable.

	Diameter	Focal Length
.01	75 mm.	20 cm.
.02	100 mm.	20 cm.



Magnifier Dissecting (ELB.101.176)

Mounted on metal base horse shoe's shape wrinkle painted with universal ball and socket arrangement for adjustment of lens according to position required.

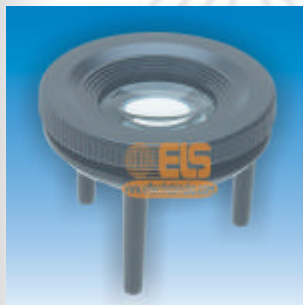
	Diameter	Focal Length
.01	75 mm.	20 cm.
.02	100 mm.	20 cm.



Flexible arm Magnifier (ELB.101.177)

General purpose magnifier consisting of a large bio-convex lens mounted on a flexible arm. The heavy base provides stability whilst the flexible arm and swivel lens mount allow the lens to be used in any position or plane.

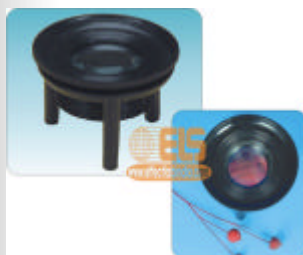
Dimensions :
 Lens focal length 250mm
 Lens diameter 100mm
 Magnification x2 approx.
 Arm length 300mm
 Base 150x110mm length x width.



Tripod Magnifiers (ELB.101.178)

With adjustable focussing, very useful for elementary, biological work because of its large view field, dia 40mm.

Type	Magnification (approx.)
.01	X 4
.02	X 5
.03	X 6



Tripod Magnifiers (ELB.101.179)

A twin lens magnifier comprising a large frame mounted lens supported on a tripod fitted with a small lens mounted on a swinging arm. Three powers of magnification are available. Overall height 118mm. Mainframe diameter 95mm, lens of diameter, 24 and 70mm.



Sliding Magnifier (ELB.101.180)

Consists of plano-convex lens set in a metal frame which travels on two parallel steel bars. Telescopic legs are fitted at each corner of the frame so that the magnifier can be firmly located over objects of varying sizes.

Dimensions Lens diameter 100mm
 Stand length 350mm
 Stand width 130mm
 Stand height 100-150mm.

illuminated Magnifier (ELB.101.181)

A large circular lens and fluorescent tube mounted on a spring loaded adjustable arm that can be set at any position or angle desired, giving

Effective Laboratory Supplies



Bringing Science to Life

Administrative Office :

Phone: +91 - 171 - 2655247, 6535247

Fax: +91 - 171 - 2652506

Website: <http://www.effectlabindia.com>

Email: info@effectlabindia.com, effectlabo@gmail.com

BIOLOGY



optimum illumination and magnification of the working area. The lens mounting and shade are of robust moulded aluminium and the arms of heavy gauge steel with tempers steel springs. An on/off push switch is mounted on the shade and the ballast transformer is interposed in the mains lead. The magnifier is supplied without mounting base or lamp which are listed below and must be chosen and purchased methods of use.

Dimensions Lens diameter 100mm

Magnification x1.75 approx.

Overall Arm, length 850mm approx.

Mains lead 1.5m from magnifier to ballast transformer. For use on 220 to 240 V mains, power consumption 22W.



www.effectlabindia.com