



## Material Properties

### Cubes metal 10 mm. (ELP.103.101)

Set of six, comprising brass, lead, iron, copper, aluminium, and zinc. Supplied in wooden case.



### Cubes, Seperate 10 mm side (ELP.103.102)

- .01 Brass
- .02 Lead
- .03 Iron
- .04 Copper
- .05 Aluminum
- .06 Zinc



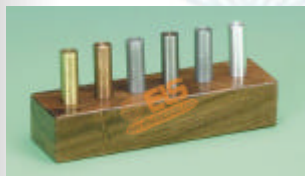
### Cubes Metal 20 mm. (ELP.103.103)

Set of six, comprising brass, lead, iron, copper, aluminium, and zinc. Supplied in wooden case.



### Cubes, Seperate 20 mm. side. (ELP.103.104)

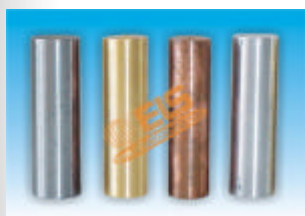
- .01 Brass
- .02 Lead
- .03 Iron
- .04 Copper
- .05 Aluminum
- .06 Zinc



### Cylinders Metal (ELP.103.105)

Set of six, comprising brass, lead, iron, copper, aluminium, and zinc. Supplied in wooden case.

- .01 Height 30 mm. and diameter 10 mm.
- .02 Height 40 mm. and diameter 10 mm.



### Cylinders Metal seperate (ELP.103.106)

30 mm. high x 10 mm. diameter

- .01 Brass
- .02 Lead
- .03 Iron
- .04 Copper
- .05 Aluminum
- .06 Zinc

### Density Cubes Set (ELP.103.107)

Here's a handy, low-cost set of 10 one-inch cubes that can be used in many experiments. What makes it unusual? It offers an array of the materials we actually use today. Learn about density, mass, volume, buoyancy, specific gravity and flotation while experiment with real-world building materials. Our set includes detailed instructions and one cube each of the following materials: Oak, Nylon, Pine, Poplar, PVC,



Aluminum, Steel, Brass, Copper, Acrylic.



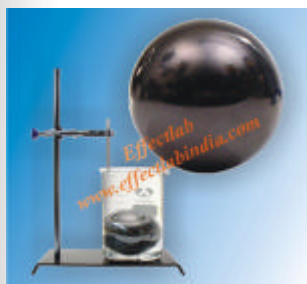
### Equal Mass Density Cubes Set (ELP.103.108)

Set of 5 metal cubes of equal (20g) mass. Cubes are copper, aluminum, zinc, iron and brass. Demonstrate inverse relationship between density and volume of equal mass metal cube.



### Ball Sets, various sizes/materials (ELP.103.109)

Six (6) different 3/4" diameter balls: wood with hole, aluminum with hole, solid glass, solid cork, and two (2) solid steel balls.



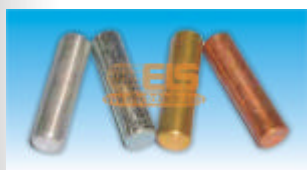
### Density Ball (ELP.103.110)

Density ball is used demonstrate the effects of temperature and mineral content on density. The metal ball will float in cold water, and sink in hot! The density of water is not constant but depends upon several factors. The effects of salinity and temperature play a large role in the flow of earth's ocean currents. The Density Ball can be used by varying salt content as well as temperature, to show the effects on density.



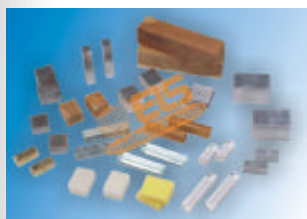
### Density Set Acrylic Cube, Cylinder and Ball (ELP.103.111)

Cube 25 mm side, Ball 25 mm dia. , Cylinder 25 mm dia. x 25 mm ht.



### Cylinder Metal Set of 4 (ELP.103.112)

Set of 4 Cylinders Aluminum, Brass, Copper and Steel. 50 mm x 12.5 mm, Length x Diameter.



### MATERIALS KIT (SOLIDS) (ELP.103.113)

A variety of materials in form of RECTANGULAR blocks, intended to familiarise the student with the appearance. 'Feel', texture, hardness and density of a range of common substances. Kit comprises two of each of seventeen blocks as detailed below.

#### Blocks, 50 x 40 x 30 mm

Softwood, hardwood, paraffin wax, aluminium, iron, foamed polystyrene.

#### Blocks, 20 x 20 x 100mm

Perspex, glass, slate, aluminium, softwood, marble.

#### Blocks, other sizes

Lead 50 x 50 x 20mm, aluminium 50 x 50 x 80mm, hardwood 50 x 50 x 200mm, brass 20 x 20 x 50mm, iron 40 x 40 x 20mm pack.

# Effective Laboratory Supplies



Bringing Science to Life

Administrative Office:

Phone: + 91 - 171 - 2655247, 6535247

Fax: + 91 - 171 - 2652506

Website: <http://www.effectlabindia.com>

Email: [info@effectlabindia.com](mailto:info@effectlabindia.com), [effectlabo@gmail.com](mailto:effectlabo@gmail.com)

# PHYSICS



## Elastic material Kit (ELP.103.114)

Containing 25 extendable steel springs, 2 wide steel springs, 114 x 75 mm dia., 2 soft latex foam blocks, reels of copper wire, one of 32 swg & 2 two of 26 swg each 50 gm. 1 length valve latex tube, 4 elastic cords with eyelets and 4 soft erasers for twisting.



## Set of springs (ELP.103.115)

With diameter 13 mm approx. and flexible length between 10 – 20 cms with hooks on both sides.

- .01 Set of 4 different pieces
- .02 Set of 6 different pieces
- .03 Set of 12 different pieces



[www.effectlabindia.com](http://www.effectlabindia.com)