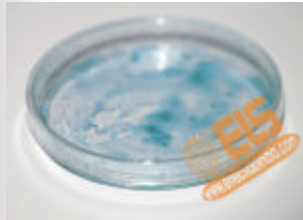


PETRI DISH (ELB.101.101)

Polypropylene, clear & unbreakable. Ridges on inside prevent the base from sticking up to the cap.

- .01 Dia. 50 mm
- .02 Dia. 75 mm
- .03 Dia. 100 mm
- .04 Dia. 125 mm
- .05 Dia. 150 mm



PETRI DISH (ELB.101.102)

Glass with beaded edges.

- | | Dia x Depth |
|-----|-------------|
| .01 | 50 x 17 mm |
| .02 | 80 x 17 mm |
| .03 | 100 x 17 mm |
| .04 | 150 x 20 mm |



PETRI DISH (ELB.101.103)

Borosilicate glass to withstand repeated dry and wet sterilization.

- | | Dia x Depth |
|-----|-------------|
| .01 | 50 x 17 mm |
| .02 | 80 x 17 mm |
| .03 | 100 x 17 mm |
| .04 | 150 x 20 mm |



PETRI DISH (ELB.101.104)

Disposable, clear polystyrene, 90 mm dia, packed individually in polyethylene bag and sterilised.

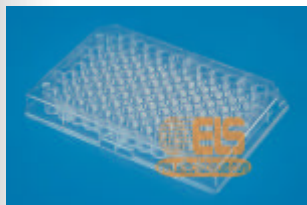


RACK FOR PETRI DISHES (ELB.101.105)

Of clear acrylic construction, with polycarbonate posts. To hold upto 60 petri dishes of 90 mm size, visibility from all sides enables the culture to be seen & checked during incubation

PETRI DISH STERILISING BOX (ELB.101.106)

For autoclaving petri dishes. Stainless steel cylindrical can with stainless steel lid with internal removable carrier for petri dishes upto 100 mm dia., size 260x115 mm ht x dia.



IMMUNOLOGY PLATES (ELB.101.107)

Elisa/Assay plates made of optically clear non-toxic polystyrene for a wide range of applications from single cell isolation to cell culture scale up, with 96 wells

- .01 Flat bottom Elisa plate
- .02 U bottom Elisa plate
- .03 Flat bottom Assay plate
- .04 U bottom Assay plate

McCARTNEY BOTTLE (ELB.101.108)

Clear glass, thick aluminium metal screw cap with rubber liner, cap 28 ml., autoclavable

CULTURE BOTTLE (ELB.101.109)

Round bottom borosilicate glass, autoclavable, with screw cap and rubber liner.

	Capacity	Size
.01	5 ml	15 x 75 mm
.02	10 ml	15 x 125 mm
.03	30 ml	25 x 100 mm
.04	60 ml	25 x 200 mm

CULTURE BOTTLE (ELB.101.110)

Flat bottom, glass, autoclavable, with screw cap and rubber liner.

	Capacity	Size
.01	5 ml	15 x 75 mm
.02	15 ml	25 x 57 mm
.03	50 ml	25 x 95 mm



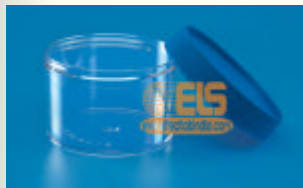
Administrative Office :

Phone: + 91 - 171 - 2655247, 6535247

Fax: + 91 - 171 - 2652506

Website: <http://www.effectlabindia.com>

Email: info@effectlabindia.com, effectlabo@gmail.com



MICRO CENTRIFUGE TUBE (ELB.101.111)

With built-in snap fit plug, can withstand high force of an ultra centrifuge.

	Capacity
.01	0.5 ml
.02	1.5 ml

RACK FOR MICRO CENTRIFUGE TUBES (ELB.101.112)

For holding twentyfour 1.5 ml tubes. Prevents movement in any direction. Holes are numbered & lettered.

FLOAT RACK (ELB.101.113)

Polypropylene, autoclavable, can hold 16 micro centrifuge tubes for incubation in water bath, with alpha-numerical marking.

SAMPLE CONTAINER (ELB.101.114)

Thin walled. graduated disposable polypropylene with easily screw able leak proof cap. Capacity 100 ml.

SCINTILLATION VIAL (ELB.101.115)

Unbreakable polyethylene vial with leakproof screw cap, for use with standard counting equipment for liquid scintillation system

.01	Cap 8 ml
.02	Cap 20 ml

RACK FOR SCINTILLATION VIAL (ELB.101.116)

Autoclavable,

.01	For 90 vials of 8 ml each
.02	For 50 vials of 20 ml each

STORAGE VIALS (ELB.101.117)

To store biological material upto -190°C , with leakproof cap. Base has longitudinal grooves which make it non-twisting when placed in a vial rack

- .01 Cap 1 ml
- .02 Cap 2 ml
- .03 Cap 5 ml



Effective Laboratory Supplies

Administrative Office :

Phone: +91 - 171 - 2655247, 6535247

Fax: +91 - 171 - 2652506

Website: <http://www.effectlabindia.com>

Email: info@effectlabindia.com, effectlabo@gmail.com



Bringing Science to Life

BIOLOGY

