



HUMAN ANATOMY (ELB.107.501)

Set of 11

- | | | |
|----------------------|------------------------|------------|
| (1) Skeleton | (2) Circulatory system | (3) Heart |
| (4) Nervous system | (5) Section of Brain | (6) Muscle |
| (7) Digestive system | (8) Respiratory system | (9) Ear |
| (10) Eye | (11) Kidneys | |

Available in following sizes:-

- .01 25 x 35 cm. sheets only in box.
- .02 25 x 35 cm. in plastic jacket with hanging hooks
- .03 35 x 50 cm. sheets only in box.
- .04 35 x 50 cm. in plastic jacket with hanging hooks
- .05 35 x 50 cm complete with hard backing. Aluminium angle frame & hanging hooks
- .06 50 x70 cm. sheets only in box.
- .07 50 x 70 cm. complete with hard backing, aluminium frame and hanging hooks.

While size 25 x 35 cm is available in sets only, other sizes are available singly as well.



HUMAN REPRODUCTIVE ORGANS (ELB.107.502)

Set of 8

- | | |
|---|--|
| (1) Male genital organs (front view) | (2) Male genital organs (sagittal view) |
| (3) How semen is formed | (4) First week of egg development and implantation |
| (5) Fertilization (cross section diagram of an ovary) | (6) Eight months old foetus |
| (7) Various stages of embryonic development | (8) Female genital organs (sagittal view) |

Available in following sizes:-

- .01 25 x 35 cm. sheets only in box.
- .02 25 x 35 cm. in plastic jacket with hanging hooks
- .03 35 x 50 cm. sheets only in box.
- .04 35 x 50 cm. in plastic jacket with hanging hooks
- .05 35 x 50 cm complete with hard backing. Aluminium angle frame & hanging hooks
- .06 50 x70 cm. sheets only in box.
- .07 50 x 70 cm. complete with hard backing, aluminium frame and hanging hooks.

While size 25 x 35 cm is available in sets only, other sizes are available singly as well.



BOTANY SERIES I (ELB.107.503)

Set of 8

- | | |
|-------------------------------------|----------------------------------|
| (1) Root, stem and bud (A) | (2) Root, stem and bud (B) |
| (3) Leaves and their transformation | (4) Photosynthesis |
| (5) Flower and inflorescence (A) | (6) Flower and inflorescence (B) |
| (7) Fruit and seeds (A) | (8) Fruit and seeds (B) |

Available in following sizes:-

- .01 25 x 35 cm. sheets only in box.
- .02 25 x 35 cm. in plastic jacket with hanging hooks
- .03 50 x70 cm. sheets only in box.



BOTANY SERIES IV (ELB.107.506)

Set of 8

- | | |
|--------------------------|--|
| (1) Plant kingdom | (2) Germination of sunflower and maize |
| (3) Germination of bean | (4) Yeast and pea |
| (5) Rhizopus and Mucor | (6) Fern |
| (7) Insectivorous plants | (8) Malvaceae |

Available in following sizes:-

- .01 25 x 35 cm. sheets only in box.
- .02 25 x 35 cm. in plastic jacket with hanging hooks
- .03 50 x70 cm.sheets only in box.
- .04 50 x 70 cm. complete with hard backing , aluminium frame and hanging hooks.

While size 25 x 35 cm is available in sets only, other sizes are available singly as well.

ZOOLOGY SERIES I (ELB.107.507)

Set of 8



BOTANY SERIES III (ELB.107.505)

Set of 8

- | | |
|----------------------|---------------------------|
| (1) Fertilization | (2) T.S.Dicot leaf |
| (3) T.S.Monocot leaf | (4) T.S.Dicot root |
| (5) T.S.Monocot root | (6) T.S.Dicot stem |
| (7) T.S.Monocot stem | (8) Types of placentation |

Available in following sizes:-

- .01 25 x 35 cm. sheets only in box.
- .02 25 x 35 cm. in plastic jacket with hanging hooks
- .03 50 x70 cm.sheets only in box.
- .04 50 x 70 cm. complete with hard backing , aluminium frame and hanging hooks.

While size 25 x 35 cm is available in sets only, other sizes are available singly as well.



BOTANY SERIES II (ELB.107.504)

Set of 8

- | | |
|------------------------|-------------------|
| (1) Typical plant cell | (2) Plant Mitosis |
| (3) Meiosis | (4) D.N.A. |
| (5) R. N. A. | (6) Bacteria |
| (7) Spirogyra | (8) Funaria |

Available in following sizes:-

- .01 25 x 35 cm. sheets only in box.
- .02 25 x 35 cm. in plastic jacket with hanging hooks
- .03 50 x70 cm.sheets only in box.
- .04 50 x 70 cm. complete with hard backing , aluminium frame and hanging hooks.

While size 25 x 35 cm is available in sets only, other sizes are available singly as well.



- | | |
|-------------------------|--------------------|
| (1) Typical animal cell | (2) Animal mitosis |
| (3) Hydra | (4) Paramecium |
| (5) Ameoba proteus | (6) Hookworm |
| (7) Tapeworm | (8) Earthworm |

Available in following sizes:-

- .01 25 x 35 cm. sheets only in box.
- .02 25 x 35 cm. in plastic jacket with hanging hooks
- .03 50 x70 cm.sheets only in box.
- .04 50 x 70 cm. complete with hard backing , aluminium frame and hanging hooks.

While size 25 x 35 cm is available in sets only, other sizes are available singly as well.



ZOOLOGY SERIES II (ELB.107.508)

Set of 8

- | | |
|---|---|
| (1) Euglena | (2) Animal kingdom |
| (3) L.H. of frog | (4) L.H. of frog(development) (metamorphosis) |
| (5) L.H. of mosquito | (6) Epithelial & connective tissues |
| (7) Simple and complex tissues and skeleton | (8) Rabbit dissection |

Available in following sizes:-

- .01 25 x 35 cm. sheets only in box.
- .02 25 x 35 cm. in plastic jacket with hanging hooks
- .03 50 x70 cm.sheets only in box.
- .04 50 x 70 cm. complete with hard backing , aluminium frame and hanging hooks.

While size 25 x 35 cm is available in sets only, other sizes are available singly as well.



ZOOLOGY SERIES III (ELB.107.509)

FROG - Set of 8

- | | |
|--------------------------------------|------------------------------------|
| (1) Frog anatomy and skeleton | (2) Frog digestive system |
| (3) Frog circulatory system | (4) Frog respiratory system |
| (5) Frog nervous system | (6) Frog reproductive system, male |
| (7) Frog reproductive system, female | (8) Frog heart |

Available in following sizes:-

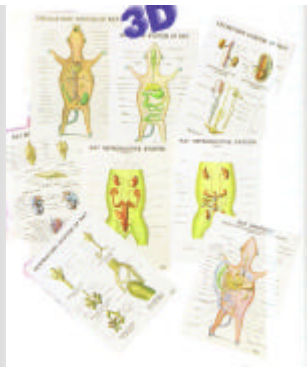
- .01 25 x 35 cm. sheets only in box.
- .02 25 x 35 cm. in plastic jacket with hanging hooks
- .03 50 x70 cm.sheets only in box.
- .04 50 x 70 cm. complete with hard backing , aluminium frame and hanging hooks.

While size 25 x 35 cm is available in sets only, other sizes are available singly as well.

ZOOLOGY SERIES IV (ELB.107.510)

RAT - Set of 8

- | | |
|---|----------------------------|
| (1) Rat anatomy,dissection showing internal organs (female) | (2) Rat digestive system |
| (3) Rat circulatory system | (4) Rat respiratory system |
| | (6) Rat reproductive |



- (5) Rat excretory system
- (6) Rat excretory system, male
- (7) Rat reproductive system, female
- (8) Rat brain & heart

Available in following sizes:-

- .01 25 x 35 cm. sheets only in box.
- .02 25 x 35 cm. in plastic jacket with hanging hooks
- .03 50 x70 cm.sheets only in box.
- .04 50 x 70 cm. complete with hard backing , aluminium frame and hanging hooks.

While size 25 x 35 cm is available in sets only, other sizes are available singly as well.



ZOOLOGY SERIES V (ELB.107.511)

Set of 8

- (1) Life History of Honey Bee
- (2) Life History of Silkworm
- (3) Life Histroy of House Fly
- (4) Malarial Parasite (Plasmodium)
- (5) Cockroach, circulatory & nervous systems
- (6) Cockroach, external features
- (7) Cockroach, digestive & respiratory systems
- (8) Earthworm, circulatory & excretory systems

Available in following sizes:-

- .01 25 x 35 cm. sheets only in box.
- .02 25 x 35 cm. in plastic jacket with hanging hooks
- .03 50 x70 cm.sheets only in box.
- .04 50 x 70 cm. complete with hard backing , aluminium frame and hanging hooks.

While size 25 x 35 cm is available in sets only, other sizes are available singly as well.